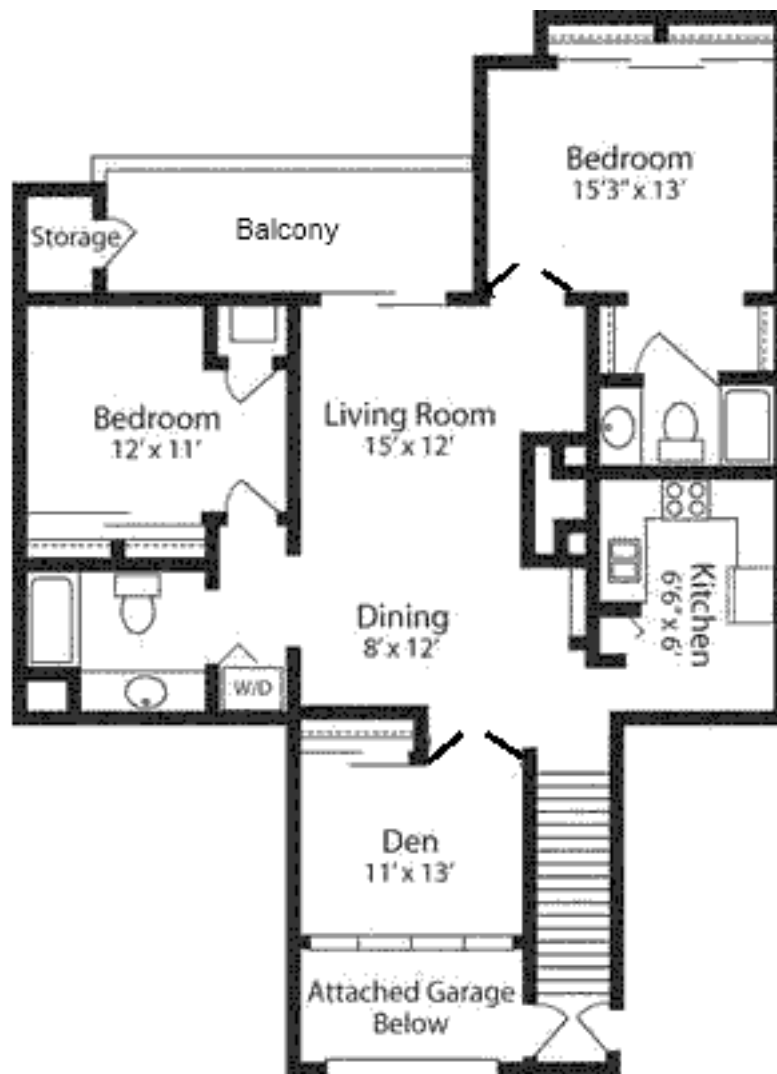




Plum Tree

APARTMENT HOMES



Apartment Type: 3C

This 1230 square foot second floor two bedroom and a den apartment features a den that can be used as a bedroom, private entry, an open concept kitchen with breakfast bar, a wood burning fireplace, a private balcony with outside storage, vaulted ceilings, central air/heating, washer/dryer, and a private attached garage.